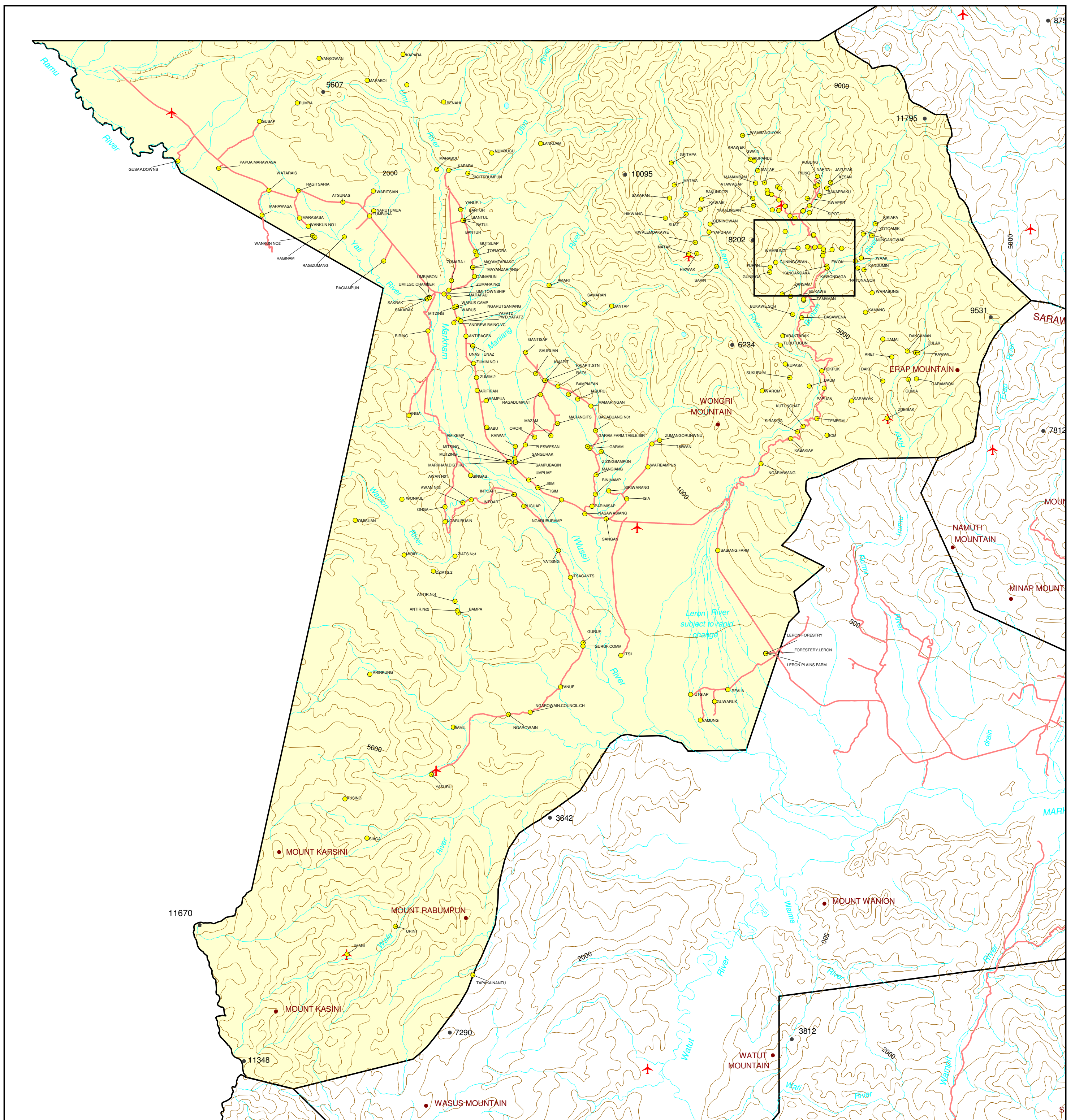


DISTRICT BOUNDARIES ON THIS MAP SHOULD NOT BE CONSIDERED AUTHORITATIVE
INFRASTRUCTURE INFORMATION SOURCED FROM GPS SURVEY (1998)
ALL OTHER TOPOGRAPHIC INFORMATION COMPILED FROM TACTICAL PILOT CHARTS (1980)
GEOGRAPHIC PROJECTION

KILOMETRES



The map shows the Kuching District with a network of roads. A red line highlights a specific route starting from the north, passing through Serapi, and then heading south towards Kuching. A red airplane icon is located near Serapi. Various locations are labeled, including Kuching, Serapi, and several villages. The map also shows a river and some topographical features.

- District Boundary
- Road
- River
- Contour with value (feet)
- Spot height (feet)
- Lake; Reef
- Village; Town
- Airfield

